



USER MANUAL / MANUAL PËRDORIMI  
BEDIENUNGSANLEITUNG / ПАСПОРТ НЗДЕПНЯ

- EN** Mounting instructions
- DE** Montageanleitung
- RU** Инструкция по монтажу
- FR** Instruction de montage
- AL** Udhëzimet e përdorimit
- ESP** Instrucciones de montaje
- GR** οδηγίες τοποθέτησης
- RO** Instrucțiunile de montaj
- BG** указания за монтаж
- RS** Uputstvo za montazu
- UA** інструкція по монтажу
- AR** تعليمات التركيب

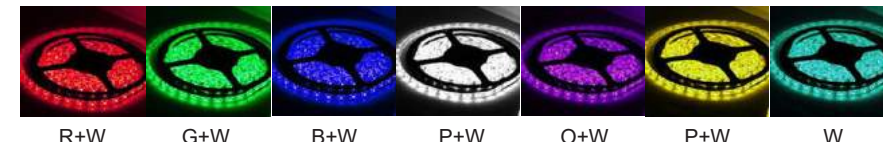
## LED Flexible Strips



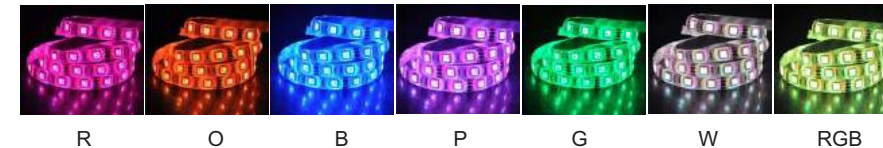
### LED Strip Light

An LED Strip Light is a flexible circuit board populated by LEDs and other components that usually comes with an adhesive backing. It had been used solely in accent lighting, backlighting, task lighting and decorative lighting applications. Water resistant strip light can protect the circuitry from direct contact with water, highly expanding its range of uses.

#### 5050 RGB+W



#### 5050 RGB

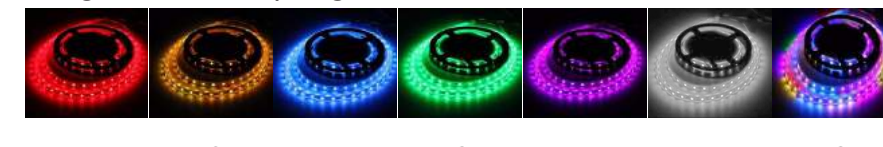


#### 3528/2835 RGB



SMD 3528/2835 RGB Strip light can't display white light

#### Single-color Strip Light



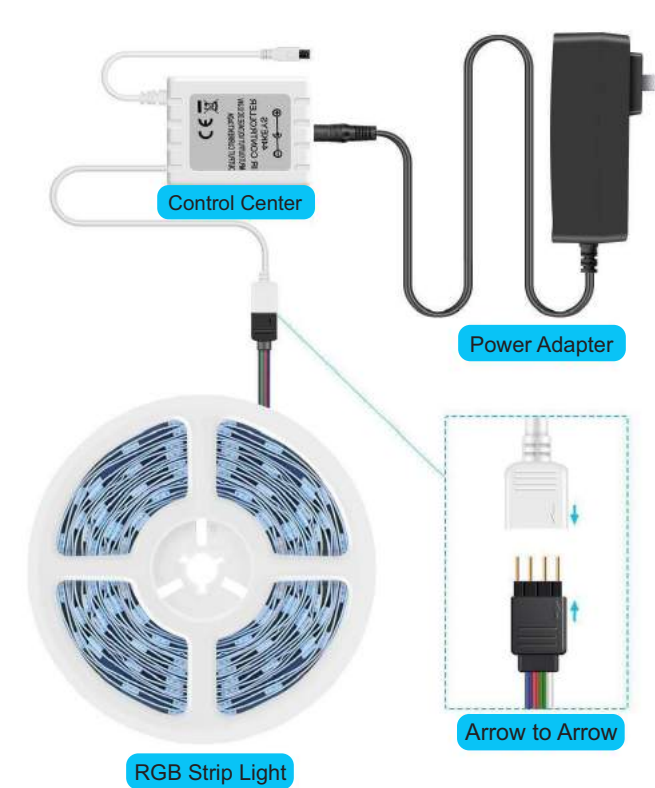
### Specification

| SMD Type             | 5050                                       |   | 3528/2835    |   |
|----------------------|--|---|--------------|---|
| Optional Light Color | Single Color                               |   | Single Color |   |
|                      | RGB/RGBW<br>RGBWW                          | Warm White/<br>Cool White/Red<br>Green/Blue/Yellow<br>Pink/Purple | RGB          | Warm White/<br>Cool White/Red<br>Green/Blue/Yellow<br>Pink/Purple |
| Control With         | Controller                                 | Dimmer  | Controller   | Dimmer  |
| Compatible Adapter   | 12V/24V                                    |   | 12V/24V      |   |
| LED Chip Size        | 5*5mm                                      |   | 3.5*2.8mm    |   |
| Length               | 5M(16.4ft) 10M (32.8ft)                    |   |              |   |
| Working Temperature  | -20 C-50 C                                 |   |              |   |
| Beam Angle           | 120  |   |              |   |
| Ingress Protection   | Waterproof (IP65/IP67/IP68) Non-waterproof |   |              |   |

#### LED Strip Light



#### How to connect the LED strip lights



### Connecting Instruction of Single-color Strip Light and Dimmer



#### Specification

| SMD Type           | 5050  | 3528/2835   |
|--------------------|---|---|
| Single Color       | Warm White/Cool White/Red/Green/<br>Blue/Yellow/Pink/Purple | Warm White/Cool White/Red/Green/<br>Blue/Yellow/Pink/Purple |
| Luminous Flux      | 10-12LM/peper LED   | 4-5LM/peper LED   |
| LED Chip Size      | 5*5mm   | 3.5*2.8mm   |
| Power              | 0.16-0.18W/peper LED  | 0.06W/peper LED   |
| Ingress Protection | Waterproof(IP65/IP67/IP68) or Non-waterproof                |   |

